

Lifting station *Aqualift F Mono*

Above-ground installation, up to model year 03/2013

Backwater valves

1

Hybrid lifting stations

2

Lifting stations

3

Drains

4

Separators

5

Septic systems

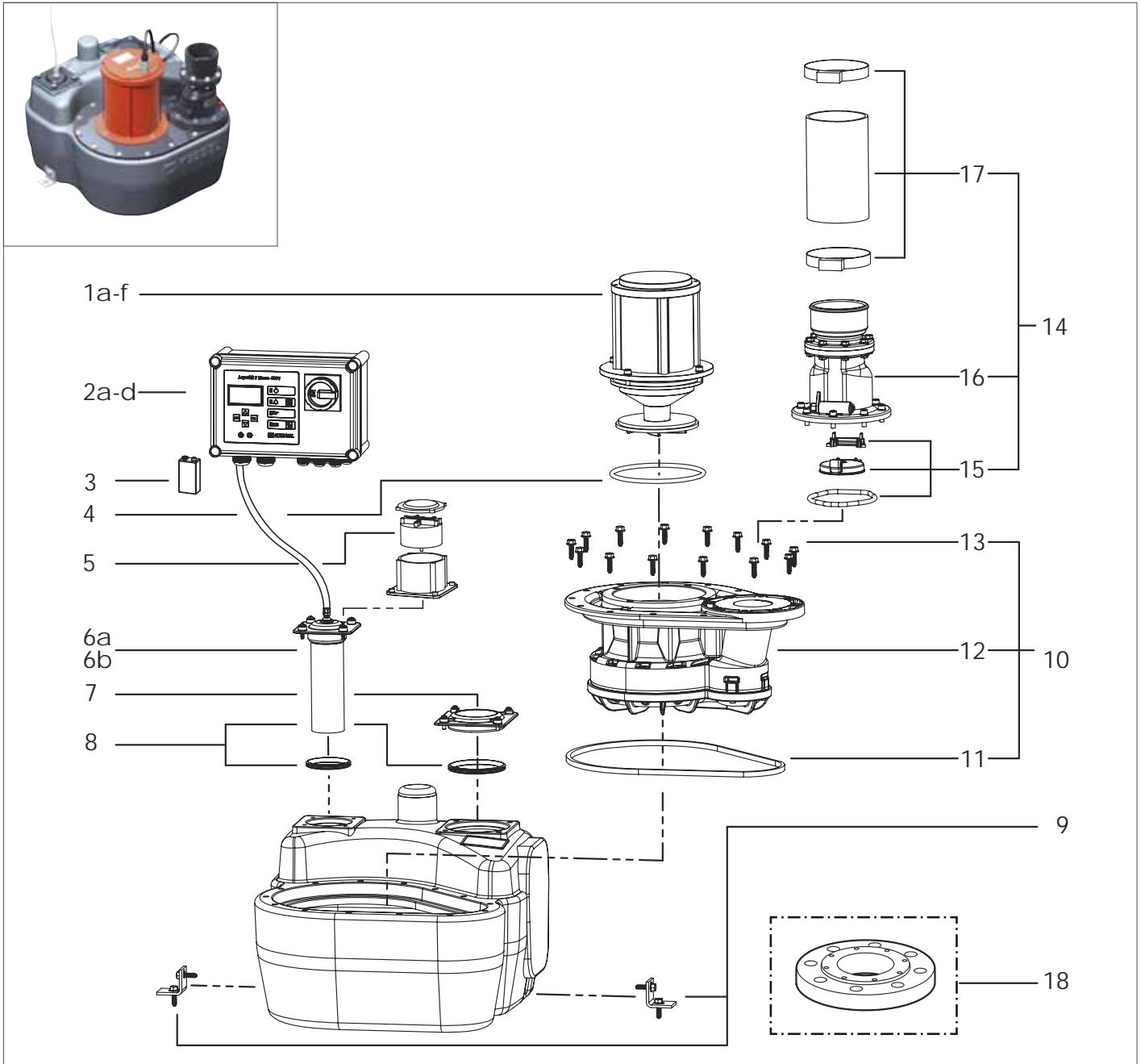
6

Rainwater harvesting

7

Index

8



Pos.	Description	Article #
1	Motor	
1a	1.1 kW, 230 V, from model year 03/2003 with 5m cable	680095
1b	1.1 kW, 400 V, from model year 03/2003 with 5m cable	28028
1c	2.2 kW, 400 V, from model year 03/2003 with 5m cable	28027
1d	1.1 kW, 230 V, from model year 03/2003 with 10m cable	680100
1e	1.1 kW, 400 V, from model year 03/2003 with 10m cable	680098
1f	2.2 kW, 400 V, from model year 03/2003 with 10m cable	on request
2	Control unit	
2a	Comfort for 1.1 kW, 400 V, from model year 03/2010	28755
2b	Comfort for 2.2 kW, 400 V, from model year 03/2010	28756
2c	Mono for 1.1 kW, 230 V, from model year 10/2009	28049
2d	Mono for 1.1 kW, 230 V, from model year 11/2009	680062
3	Battery	680034
4	Flange seal	680052
5	Mono pressure monitor incl. seal, up to model year 12/2009	28045

Pos.	Description	Article #
6	Immersion pipe	
6a	with 10 m cable, up to model year 12/2009	680048
6b	5 m hose, from model year 01/2010	680055
7	Access cover	680044
8	Seal set	28608
9	Attachment bracket with screws (2 x)	680046
10	Replacement set pump flange, from model year 03/2003	28051
11	Pump flange seal	680045
12	Pump flange, from model year 03/2003	680050
13	Screw set (14 x)	680047
14	Replacement set flap housing Ø 110	28676
15	Backwater valve, rolling ring and flap stay	680054
16	Flap housing, single system	680060
17	Pressure hose with 2 hose clamps, Ø 110	28663
18	Adapter plate standard flange	on request