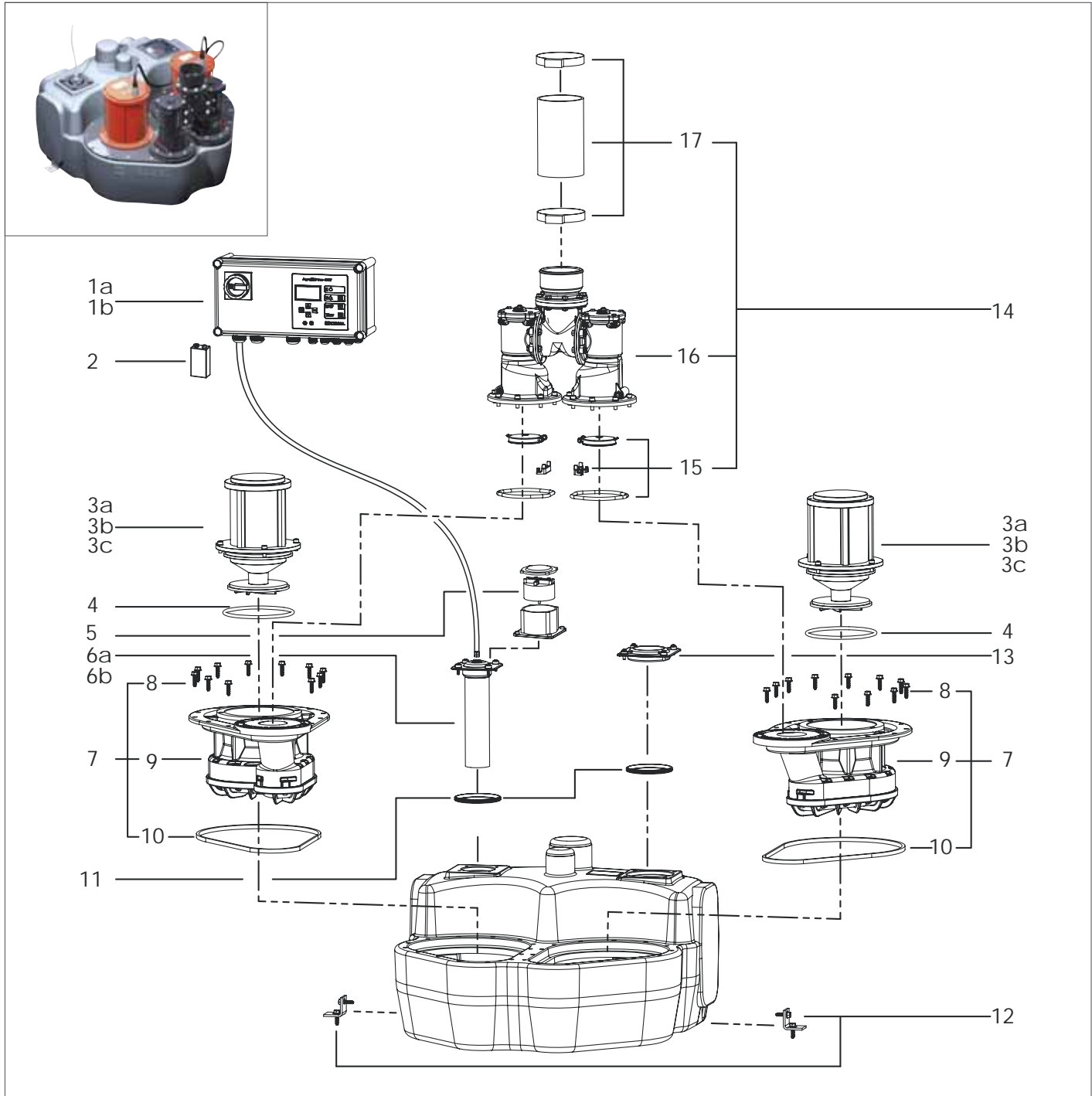


Lifting station *Aqualift F Duo*

Above-ground installation, up to model year 03/2013



Pos.	Description	Article #
1	Control unit	
1a	Comfort with 1.1 kW, 400 V, from model year 03/2010	28757
1b	Comfort with 2.2 kW, 400 V, from model year 03/2010	28758
2	Battery	680034
3	Motor	
3a	1.1 kW, 400 V, from model year 03/2003 with 5m cable	28028
3b	2.2 kW, 400 V, from model year 03/2003 with 5m cable	28027
3c	2.2 kW, 400 V, from model year 03/2003 with 10m cable	on request
4	Flange seal	680052
5	Duo pressure monitor incl. seal, up to model year 12/2009	28046
6	Immersion pipe	
6a	with 10 m cable, up to model year 12/2009	680049

Pos.	Description	Article #
6b	5 m hose, from model year 01/2010	680056
7	Replacement set pump flange, from model year 03/2003	28051
8	Screws (14 x)	680047
9	Pump flange, from model year 03/2003	680050
10	Pump flange seal	680045
11	Seal set	28608
12	Attachment bracket with screws (2 x)	680046
13	Access cover	680044
14	Replacement set flap housing Ø 110	28677
15	Backwater valve, rolling ring and flap stay	680054
16	Flap housing twin station without closure valve	680061
17	Pressure hose with 2 hose clamps, Ø 110	28663