

Lifting station for grey water *Aqualift S Tronic Mono/Duo*

Installation in the ground plate, Mono up to model year 01/2013 and Duo up to model year 12/2011

Backwater valves

1



Fig. shows status up to model year 12/2010

Hybrid lifting stations

2



Fig. shows status up to model year 12/2010

Lifting stations

3

Drains

4

Separators

5

Septic systems

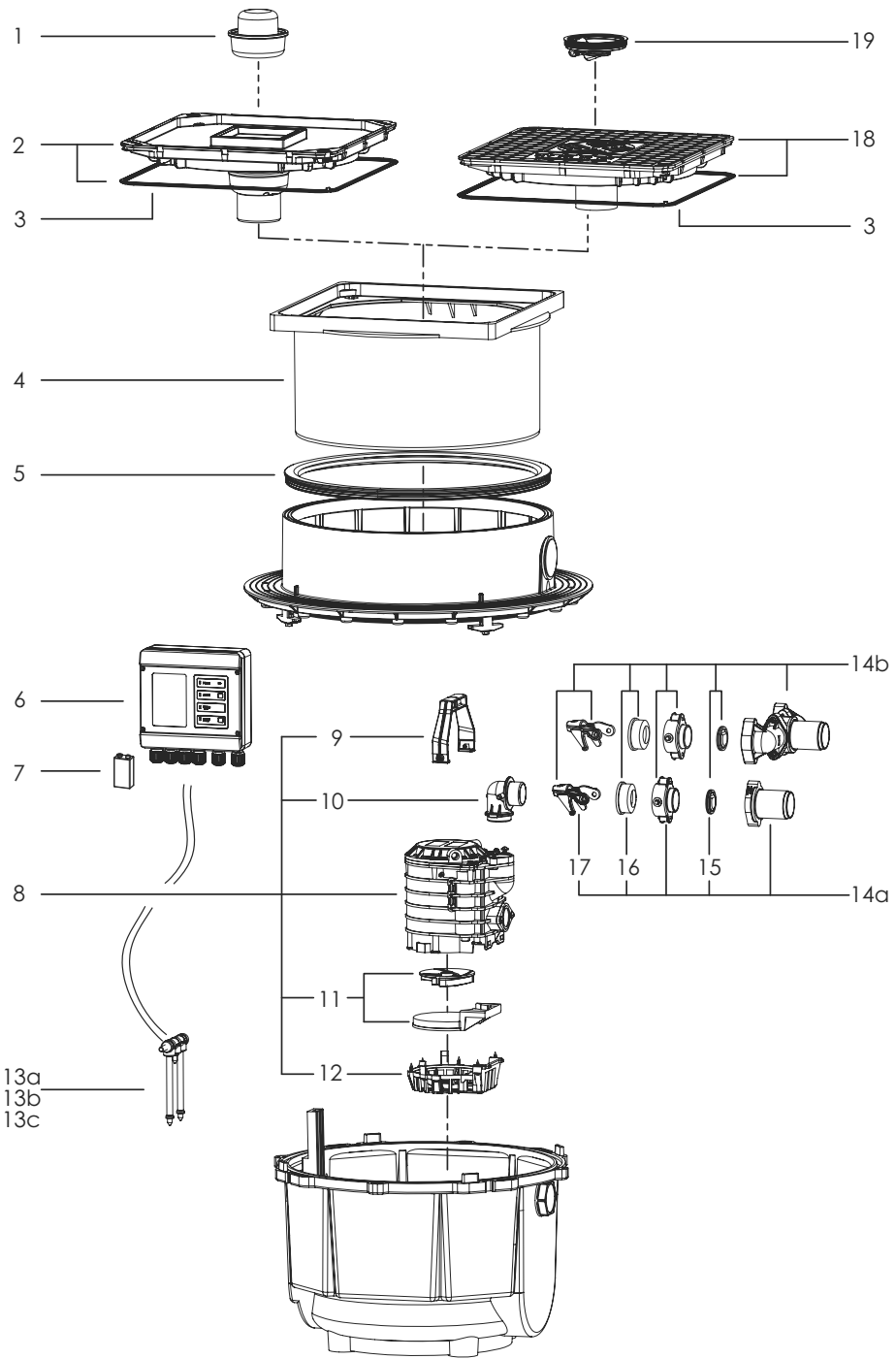
6

Rainwater harvesting

7

Index

8



Pos.	Description	Article #
1	Odour trap	47200
2	Cover plate stone grey, can be tiled over with drain and seal, up to model year 12/2010	83055
3	Seal for cover plate	680025
4	Upper section	83061
5	Profile lip seal	680026
6	Control unit	*
7	Battery	680034
8	Replacement pump, from model year 01/1996	28552a
9	Pump handle	680007
10	Elbow	680033
11	Replacement set impeller and intake cover	28038
12	Intake cage	680004

Pos.	Description	Article #
13	Tester	
13a	Quadruple probe Mono	680010
13b	Triple switching probe Duo	680012
13c	Double alarm probe Duo	680011
14	Pump locking set	
14a	Mono (single-pumping station)	28031
14b	Duo (twin pumping station)	28032
15	Backwater flap, from model year 01/1996	27207
16	Rubber nipple	680020
17	Locking lever	680018
18	Cover plate black with drain and seal	83053
19	Multistop	43500

*Older control units are being replaced. See overview on page 69