
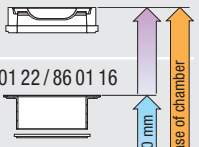
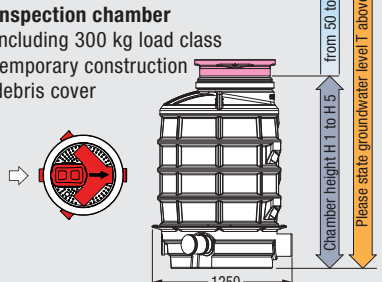






Backwater inspection chambers for wastewater with sewage or wastewater without sewage

Backwater protection

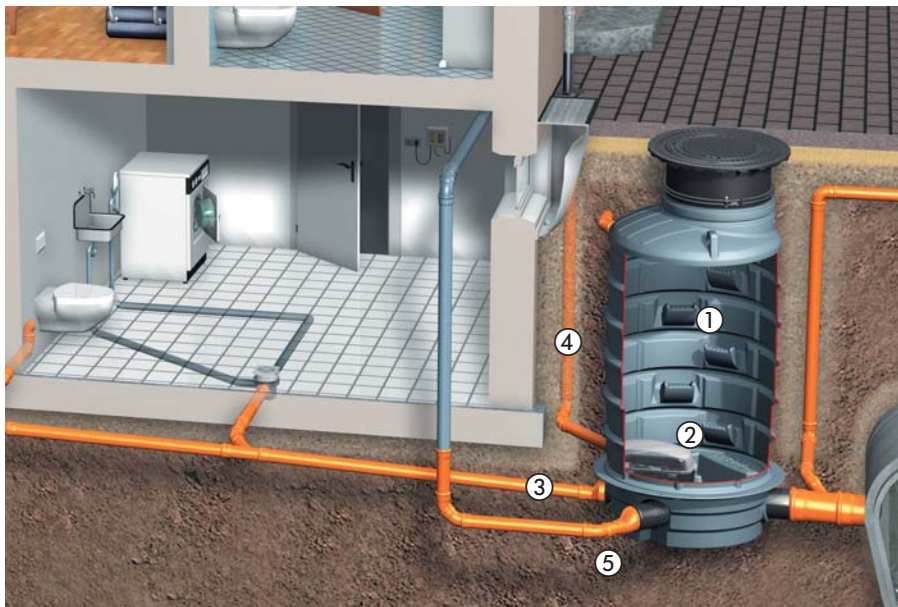
1

Backwater inspection chamber Ø 1000			Products
Illustration and dimensioned drawing	Article description	Chamber height	Article #
 <p>Standard cover on-site</p>  <p>Accessories: Art. # 86 01 22 / 86 01 16</p> <p>Inspection chamber including 300 kg load class temporary construction debris cover</p> 	<p>Backwater inspection chamber Ø 1000 Polyethylene construction For underground installation Monolithic design, with open continuous channel and clean out, with integrated access steps, watertight, resistant to aggressive wastewater, with telescopic height-adjustable protective cover made of polymer for use during the construction period (can be used as a cover in green areas). Triple 160 mm hub type gasketed inlets (left and right inlets with open channel passage through chamber, center hub inlet connected to housing for insertion of KESSEL backwater valve). Available backwater valve options - KESSEL <i>Staufix SWA</i>, KESSEL <i>Staufix FKA</i> or KESSEL <i>Pumpfix F</i>.</p> <p>Outlet:</p> <p>1 Ø 160 mm spigot type outlet 2 Ø 200 mm spigot type outlet</p> <p>For connection to PVC pipe according to EN 1401-1 and PE-HD connections according to EN 12666-1.</p> <p>Handles groundwater depths up to 2000 mm</p> <p>Further accessories see page 50 - 51</p> <p>Distance from base of chamber to: Base of inlet approx. 136 mm Base of outlet approx. 108 mm</p> <p> Certification no. Z-42.1-333</p>	<p>1 H1: 1180 mm H2: 1680 mm H3: 2180 mm H4: 2680 mm H5: 3180 mm</p> <p>2 H1: 1180 mm H2: 1680 mm H3: 2180 mm H4: 2680 mm H5: 3180 mm</p>	<p>88 10 05-DN 150 88 15 05-DN 150 88 20 05-DN 150 88 25 05-DN 150 88 30 05-DN 150</p> <p>88 10 05 88 15 05 88 20 05 88 25 05 88 30 05</p>

Conversion kit			Accessories
Illustration	Article description	Outer diameter Ø (mm)	Article #
<p>For models made on or after Jan 2011</p> 	<p>Conversion kit <i>Pumpfix F Komfort</i> With 15 m cable length, incl. Comfort control unit and connection for venting pipe For conversion to the inspection chamber with backwater pumping station <i>Pumpfix F</i>, for wastewater with or without sewage</p> <p>Cable extension set for pump, motor and probe see page 32</p>	<p>Ø 110-200</p>	<p>80 102</p>
<p>For models made on or after Jan 2011</p> 	<p>Conversion kit <i>Staufix FKA Komfort</i> With 15 m cable length, incl. Comfort control unit and connection for venting pipe For conversion to the inspection chamber with backwater valve <i>Staufix FKA</i>, for wastewater with or without sewage</p> <p>Cable extension set for motor and probe see page 32</p>	<p>Ø 110-200</p>	<p>80 104</p>
<p>For models made on or after Jan 2011</p> 	<p>Conversion kit <i>Staufix SWA</i> For conversion to the inspection chamber with backwater valve <i>Staufix SWA</i>, for wastewater without sewage</p>	<p>Ø 110-200</p>	<p>80 091</p>

Backwater inspection chambers for wastewater with sewage or wastewater without sewage

Installation example backwater inspection chamber Ø 1000



- ① Backwater chamber
- ② Clean out
- ③ Basement drains
- ④ Roof drains
- ⑤ Basement drainage

The KESSEL backwater chamber has a special cleaning opening as standard, for the use of KESSEL backwater valves as accessories - either during installation or at a later date. The wastewater from the building flows backwater-proof and gravity fed to the chamber and then to the sewer.

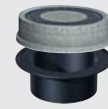
Three standard connections for basement drains, roof drains and basement drainage are included. Cover for garden installation is included in the scope of supply, further upper sections and covers of the classes A/B/D are available.

Professional advantages

- **Variable upper section**
inclinable and height adjustable
upper sections available as accessory.



Upper section
with cover plate



Upper section
for standard
bearing ring

Further accessories starting page 50

- **Simple to assemble** with light-weight inspection chamber components and easy connection technique.
- **Long-term reliability** with an absolute water-tight inspection chamber system which is resistant to sedimentary deposits and aggressive media as well as root infiltration.