
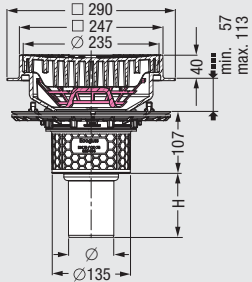

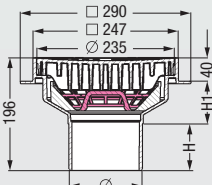

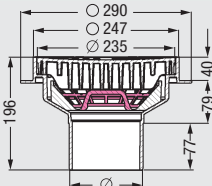


Parking deck drains *Ecoguss*

Products

Illustration and dimensioned drawing	Article description	Outer diameter Ø (mm)	Article #									
  <p>4.5 l/sec flow rate Installation area 300 x 300 mm</p>	<p><b>Parking deck drain <i>Ecoguss</i></b> Vertical outlet, for connection to SML-pipe according to EN 877, with sludge trap</p> <p><input type="checkbox"/> <b>System 125</b></p> <p><b>With pressure sealing flange in stainless steel AISI 304 with square upper section in <i>Ecoguss</i> 247 mm x 247 mm with connection flange and round slotted cover Ø 235 mm, class B 125, with <i>Lock &amp; Lift</i> System</b></p> <p><b>Core drilling only Ø 160 mm with <i>Quick-Fit</i></b></p> <table border="1"> <tr> <td>Ø</td> <td>78</td> <td>110</td> </tr> <tr> <td>H</td> <td>110</td> <td>110</td> </tr> </table> <p>  EN 1253-1</p> <p><b>Accessories:</b> <i>Multistop</i> Art. # 48 500, odour trap Art. # 27 169 see page 234</p>	Ø	78	110	H	110	110	<p>Ø 78 Ø 110</p>	<p><b>48 878.01</b> <b>48 811.01</b></p>			
Ø	78	110										
H	110	110										
<p><b>Single piece pipe connection drain</b></p>   <p>4.5 l/sec flow rate Installation area 300 x 300 mm</p>	<p><b>Parking deck drain <i>Ecoguss</i>, square</b> Vertical outlet, for connection to SML-pipe/plastic pipe, with sludge trap</p> <p><b>1 System 100: SML-pipe</b> <b>2 System 125: plastic pipe</b></p> <p><b>with square upper section in <i>Ecoguss</i> with connection flange 247 mm x 247 mm and round slotted cover Ø 235 mm, class B 125, with <i>Lock &amp; Lift</i> System</b></p> <table border="1"> <tr> <td>Ø</td> <td>110</td> <td>125</td> </tr> <tr> <td>H</td> <td>77</td> <td>83</td> </tr> <tr> <td>H1</td> <td>79</td> <td>73</td> </tr> </table> <p><b>Accessories:</b> <i>Multistop</i> Art. # 48 500 see page 234</p>	Ø	110	125	H	77	83	H1	79	73	<p><b>1</b> Ø 110 <b>2</b> Ø 125</p>	<p><b>48 501</b> <b>48 502</b></p>
Ø	110	125										
H	77	83										
H1	79	73										
<p><b>Single piece pipe connection drain</b></p>   <p>4.5 l/sec flow rate Installation area Ø 300 mm</p>	<p><b>Parking deck drain <i>Ecoguss</i>, round</b> Vertical outlet, for connection to SML-pipe/plastic pipe, with sludge trap</p> <p><b>1 System 100: SML-pipe</b> <b>2 System 125: plastic pipe</b></p> <p><b>with round upper section in <i>Ecoguss</i> with connection flange Ø 247 mm and round slotted cover Ø 235 mm, class B 125, with <i>Lock &amp; Lift</i> System</b></p> <table border="1"> <tr> <td>Ø</td> <td>110</td> <td>125</td> </tr> <tr> <td>H</td> <td>77</td> <td>83</td> </tr> <tr> <td>H1</td> <td>79</td> <td>73</td> </tr> </table> <p><b>Accessories:</b> <i>Multistop</i> Art. # 48 500 see page 234</p>	Ø	110	125	H	77	83	H1	79	73	<p><b>1</b> Ø 110 <b>2</b> Ø 125</p>	<p><b>48 503</b> <b>48 504</b></p>
Ø	110	125										
H	77	83										
H1	79	73										

Installation example parking deck drains *Ecoguss*



① Upper section  
② Sealing flange  
③ Connection to SML-pipe

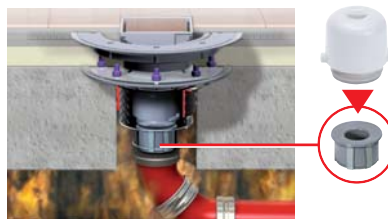
The KESSEL *Ecoguss* drains are especially suitable for installation in garages and car parks. The high strength low weight body and upper section handles traffic loads up to 12.5 metric tons and a stainless steel waterproof sealing flange is available if required. The compact drain bodies are available with various outlet sizes which are designed for connection directly to SML cast iron drainage piping.

No-compromise fire protection

Floor drains are critical when it comes to spreading of fire in a building. *Ecoguss* drains combined with KESSEL fire protection elements meet all the requirements for fire resistance class R 120.

■ The determining factor is the fire resistance class, not the building material class!

The *Ecoguss* drains with vertical outlets are designed specifically for use with the KESSEL **Fire-Kit** fire protection insert which offers the highest fire resistance class - R 120. As soon as fire enters the lower portion of the *Ecoguss* drain, the Fire-Kit expands and completely seals the opening to prevent fire and smoke from reaching the above floor.



■ **Quick-Fit** passage seal including fire protection ring for fire resistance class R 120.

Additional security for fire protection is offered by the KESSEL **Quick-Fit** passage seal including fire protection ring. If floor drains are not poured into the concrete floor but inserted later into cored holes in the concrete slab, the space between the cored hole and the exterior of the drain body also needs to be secured against fire. In the case of a fire, the fire protection ring expands and completely seals the opening between the exterior of the drain body and the cored hole - preventing fire and smoke from reaching the above floor.



Professional advantages

- **Metallic composite material**  
Metallic properties but still non corrosive and non-conductive (**no electrical grounding necessary!**)
- **Honeycomb structure** for perfect concrete bonding
- **High temperature-resistant materials**  
Briefly up to 400°C, for processing with hot bitumen acc. to DIN 18195
- **With SML pipe connection**  
Connection to SML pipe according to EN 877 in Ø 58, 78, 110 and Ø 83!  
No transition pieces any more!
- **Sound insulation**
  - Sound-absorbent material
  - For increased sound insulation to DIN 4109 < 30 dB (A)
- **Variable upper section**  
rotatable, tiltable and height adjustable
- **Chemical resistance**  
Extremely high acid/alkali resistance for chemically-polluted wastewater.
- **High discharge rates**
- **With Lock & Lift System**
  - Thermal insulation insert available – ready to install
- **High shatter resistance and high load resistance**  
Parking deck drains carry class B rating (12.5 ton loads).