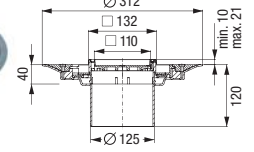
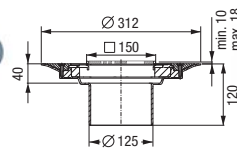
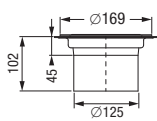


Bathroom drains "The Ultraflat" and "The Vertical" System 125

Upper section for PVC floorings

Variofix shallow bed upper sections



in stainless steel AISI 304

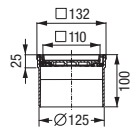
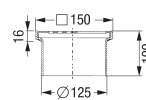
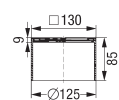
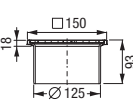
with cover \varnothing 133 mm
in stainless steel AISI 304,
 class L 15, screwed.
 For use with 1-4 mm PVC / vinyl flooring.
 Art. # 59 192
 not in combination with drain body "The Ultraflat"
 Custom made product (delivery time on request)

in ABS, incl. mesh fabric

with slotted cover/rim \square 138 mm
in stainless steel,
 class L 15, screwed.
 For tile thickness of 8-16 mm.
AISI 304 Art. # 48 963
AISI 316L Art. # 48 206

with recessed polymer cover
for on-site tiling \square 110 mm
rim in stainless steel,
 class K 3, with locking system
AISI 304 Art. # 48 906
AISI 316L Art. # 48 208

Upper sections



in ABS...

with slotted cover/rim
 \square 138 mm
in stainless steel
 screwed, class L 15
AISI 304 Art. # 48 951
AISI 316L Art. # 48 205

in ABS...

with slotted cover
 \square 120 mm
in stainless steel AISI 304
 class K 3
 Art. # 48 165

in ABS...

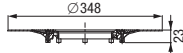
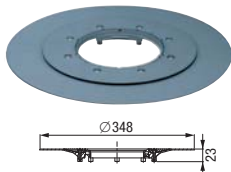
with slotted cover \square 138 mm, class K 3,
in stainless steel,
 screwed
AISI 304 Art. # 48 950
AISI 316L Art. # 48 209

in ABS,
black
 Art. # 48 193

in ABS, tileable...

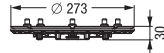
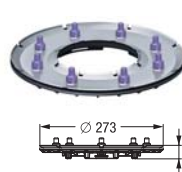
\square 110 mm, made of polymer, class K 3
with rim
in stainless steel Art. # 48 211
with rim
in polymer Art. # 48 210
AISI 304 Art. # 48 211
AISI 316L Art. # 48 207

Accessories



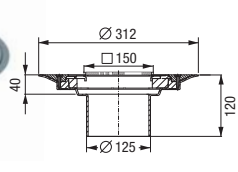
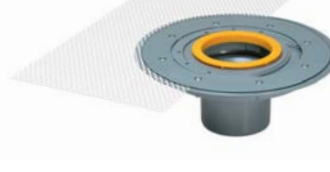
Waterproofing flange with counter flange

in ABS, \varnothing 348 mm (also for compound seal)
 Art.Nr. 48 410
 can be combined with drain bodies and extension sections



Pressure sealing flange

in stainless steel AISI 304, \varnothing 273 mm,
 with seeping water opening
 Art. # 48 402
 can be combined with drain bodies and extension sections



Intermediate section with glue flange

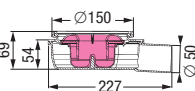
in ABS, for shallow bed gasket
 incl. mesh fabric
 Art. # 48 900

Mesh fabric for Art. # 48 410
 Art. # 680 351

Elastomer waterproof membrane in NBR for Art. # 48 402
 Art. # 48 981

Drain bodies

1.0 l/sec flow rate *)
 Sealing water height 30 mm

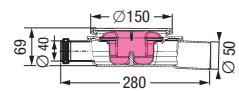


"The Ultraflat" in ABS

with removable odour trap
Lateral outlet \varnothing 50
 Art. # 45 700

Lateral outlet \varnothing 75
 Art. # 45 770

1.0 l/sec flow rate *)
 Sealing water height 30 mm



"The Ultraflat" in ABS

with removable odour trap
with lateral inlet \varnothing 40,
lateral outlet \varnothing 50
 Art. # 45 701

Modular system with covers in stainless steel AISI 304 / AISI 316L

Variofix shallow bed upper sections with design cover



in ABS, incl. mesh fabric

design covers □ 120 mm and rim in stainless steel, class K 3 / L 15. For tile thickness of 8-21 mm, with or without Lock & Lift System

			Kessel (Cl. L 15)	Oval (Cl. L 15)	Spot (Cl. K 3)	Cross (Cl. K 3)	Festival (Cl. K 3)	Parade (Cl. K 3)	Slot (Cl. K 3)	Sticks (Cl. K 3)
with Lock & Lift...	AISI 304	Art. #	48 904	48 905	48 621	48 613	48 615	48 624	48 619	48 617
	AISI 316L	Art. #	48 204	-	-	-	-	-	-	-
without Lock & Lift...	AISI 304	Art. #	48 625	48 626	48 620	48 612	48 614	48 623	48 618	48 616

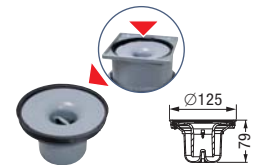
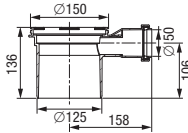
Upper section with design cover



in ABS

design covers □ 120 mm and rim in stainless steel, class K 3 / L 15 with or without Lock & Lift System

			Kessel (Cl. L 15)	Oval (Cl. L 15)	Spot (Cl. K 3)	Cross (Cl. K 3)	Festival (Cl. K 3)	Parade (Cl. K 3)	Slot (Cl. K 3)	Sticks (Cl. K 3)
with Lock & Lift...	AISI 304	Art. #	48 201	48 202	48 221	48 213	48 215	48 224	48 219	48 217
	AISI 316L	Art. #	48 203	-	-	-	-	-	-	-
without Lock & Lift...	AISI 304	Art. #	48 225	48 226	48 220	48 212	48 214	48 223	48 218	48 216



Extension section

in PP, with lip seal

without lateral inlet

Art. # 48 987

with lateral inlet \varnothing 50

Art. # 48 989

Multistop

odour, foam, rodent and insect stop

Art. # 48 500

Hair filter

made of polymer

Art. # 48 700

Sludge trap

made of polymer

Art. # 48 168

Odour trap

for all upper sections System 125, sealing water height 50 mm according to norm

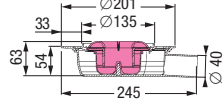
Art. # 48 600

Not in combination with tilable upper sections

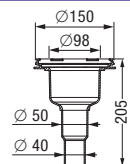
0.6 l/sec flow rate *)
Sealing water height 30 mm

1.0 l/sec flow rate *)
Sealing water height 30 mm

*) according to EN 1253-1 - 20 mm threshold



1.2 l/sec flow rate *)
Sealing water height 50 mm



"The Ultraflat" in ABS

with sealing flange for shallow bed gasket,

with removable odour trap

Lateral outlet \varnothing 40,

Art. # 45 740

Lateral outlet \varnothing 50,

Art. # 45 750

"The Vertical" in ABS

Vertical outlet \varnothing 50/40

with removable odour trap*

fits all upper sections System 125

Art. # 45 254

* Not in combination with tilable upper sections