

Upper section Ø 800

Made of polymer/stainless steel

Compatibility:

For use as upper section for the engineering system base *Ecolift XL Mono/Duo* for the version with minimum installation depth page 84

Version:

with/without waterproof flange

square, tileable, without waterproof flange

Installation depth D in mm (min./max.)

Covers

Art. no.

65 - 314

Class A/L 15

874 01 75

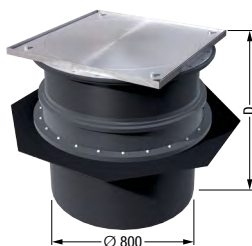


square, tileable, with waterproof flange

282 - 531

Class A/L 15

874 01 76



square, not tileable, without waterproof flange

50 - 299

Class A/L 15

874 01 77

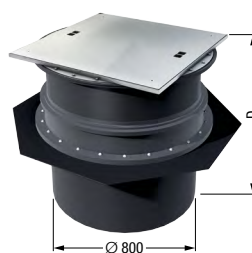


square, not tileable, anti-slip, with waterproof flange

267 - 516

Class A/L 15

874 01 78



square, without waterproof flange

274 - 523

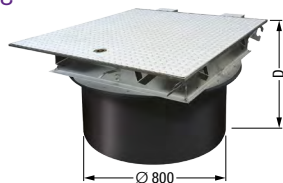
Class B

874 01 79

274 - 523

Class D

874 01 80



round, without waterproof flange

65 - 314

Class K 3

874 01 81

