

## Bathroom drain *Classic* with *Variofix* shallow bed upper section

Made in ABS

With removable odour trap,  
sealing water height 50 mm, with fixed lip seal.  
Drainage capacity 0.8 l/sec flow rate.  
Installation area 220×180 mm

With *Variofix* shallow bed upper section in ABS,  
with non-mounted waterproofing membrane  
according to EN 1253-1 and DIN 18534-1-W3-I  
for shallow bed sealing

### Cover:

Design cover *Oval* 120×120 mm and rim made  
of stainless steel AISI 304, for tile thicknesses  
8 – 21 mm, class L 15;  
standard slotted cover 95×95 mm made of  
stainless steel AISI 304, for tile thicknesses  
6 – 14 mm, class K 3 or  
slotted cover 138×138 mm and rim made of  
stainless steel AISI 304, for tile thicknesses  
8 – 16 mm, class L 15



Illustration shows Art. no. 40 150.54  
with *Lock & Lift* locking system

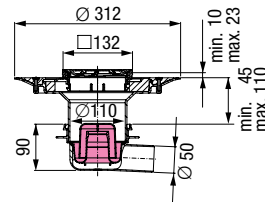


Illustration shows Art. no. 40 150.54

System 100



### Lateral outlet

Outer diameter Ø (mm)	Art. no.
-----------------------	----------

With design cover *Oval* with *Lock & Lift* locking system

Ø 50	40 150.54
Ø 75	40 170.54

With standard slotted cover

Ø 50	40 150.50
Ø 75	40 170.50

With slotted cover

Ø 50	40 150.51
Ø 75	40 170.51

### Vertical outlet

Outer diameter Ø (mm)	Art. no.
-----------------------	----------

With design cover *Oval* with *Lock & Lift* locking system

Ø 50	40 250.54
Ø 75	40 270.54

With standard slotted cover

Ø 50	40 250.50
Ø 75	40 270.50

With slotted cover

Ø 50	40 250.51
Ø 75	40 270.51



EN 1253-1

## Bathroom drain *Classic* with glue flange

Made in ABS

With removable odour trap,  
sealing water height 50 mm, with fixed lip seal.  
Drainage capacity 0.8 l/sec flow rate.  
Installation area 180×180 mm

With upper section in ABS,  
with glue flange and counter flange

### Cover:

Slotted cover 100×100 mm in stainless steel  
AISI 304, class K 3



Illustration shows Art. no. 40 250.90

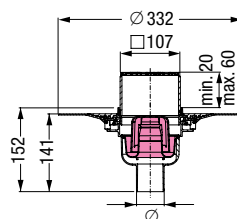


Illustration shows Art. no. 40 250.90

System 100



### Lateral outlet

Outer diameter Ø (mm)	Art. no.
-----------------------	----------

Ø 50	40 150.90
Ø 75	40 170.90

### Vertical outlet

Outer diameter Ø (mm)	Art. no.
-----------------------	----------

Ø 50	40 250.90
Ø 75	40 270.90



EN 1253-1